

**Quadra-Chek® Digital Readouts**

Know precisely





You can't make a more accurate choice.

**Quadra-Chek® Digital Readouts** Metronics is the world's premiere developer of metrology software and digital readouts for measuring and inspecting 2D and 3D geometric components.

**Metronics Quadra-Chek systems are the standard control interface on the precision measuring devices of many of the world's leading precision metrology instrument manufacturers.**

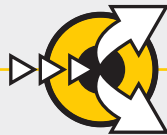
Quadra-Chek digital readouts support industries that call for precise measurement and inspection of 2D and 3D parts in single-sensor and multi-sensor environments. The products feature an intuitive user interface and simple, meaningful visual displays. Their design reflects a deep understanding of user needs and a uniform work process model that supports operators at every stage in the measurement process. Metronics digital readouts lead the precision inspection industry with innovations that improve operator productivity, reduce errors and save time and money.

**Quadra-Chek 100 Series Digital Readouts** A flexible, compact and precise digital readout for 1- to 4-axis measuring instruments. Ideal for measuring angular or linear dimensions.

**Quadra-Chek 200 Series Geometric Readouts** Our original digital readout with a fresh new interface and sleek design. A time-saving measurement tool with patented Measure Magic™ technology. Ideal for measuring 2D features.

Metronics develops world-class metrology software and geometric digital readouts. The Quadra-Chek product line provides unmatched support for single-axis and multi-axis dimensional measurement of 2D and 3D parts on both new and existing tool platforms.

Quadra-Chek digital readouts and PC-based products integrate innovative user interface conventions, state-of-the-art ergonomics, powerful data import, export and analysis tools and are supported by an international team of field engineers.



### Intuitive interface design

Quadra-Chek products are based on insights gained from ongoing human factors research. They simplify repetitive tasks, visualize measurement data, and expand the possibilities of dimensional inspection processes. Intuitive work process models and operator interface design innovations extend programming, automation and measurement capabilities across instruments, advance new standards for ease-of-use, and reduce operator training time.

- › Windows® platform
- › Graphic user interface
- › Icon-based tools and toolbars
- › Color coding
- › Audio feedback
- › Contextual help
- › Intelligent, time-saving protocols
- › IrDA communication

### Powerful data management tools

Integral communication tools enable operators to record, store and analyze measurement data. Powerful features allow operators to selectively or historically document measurements in dimensioned photographs and schematic drawings, as well as to transfer measurement data efficiently among machines performing related tasks. Operators can also export data to online databases for offline analysis by managers and quality control specialists.

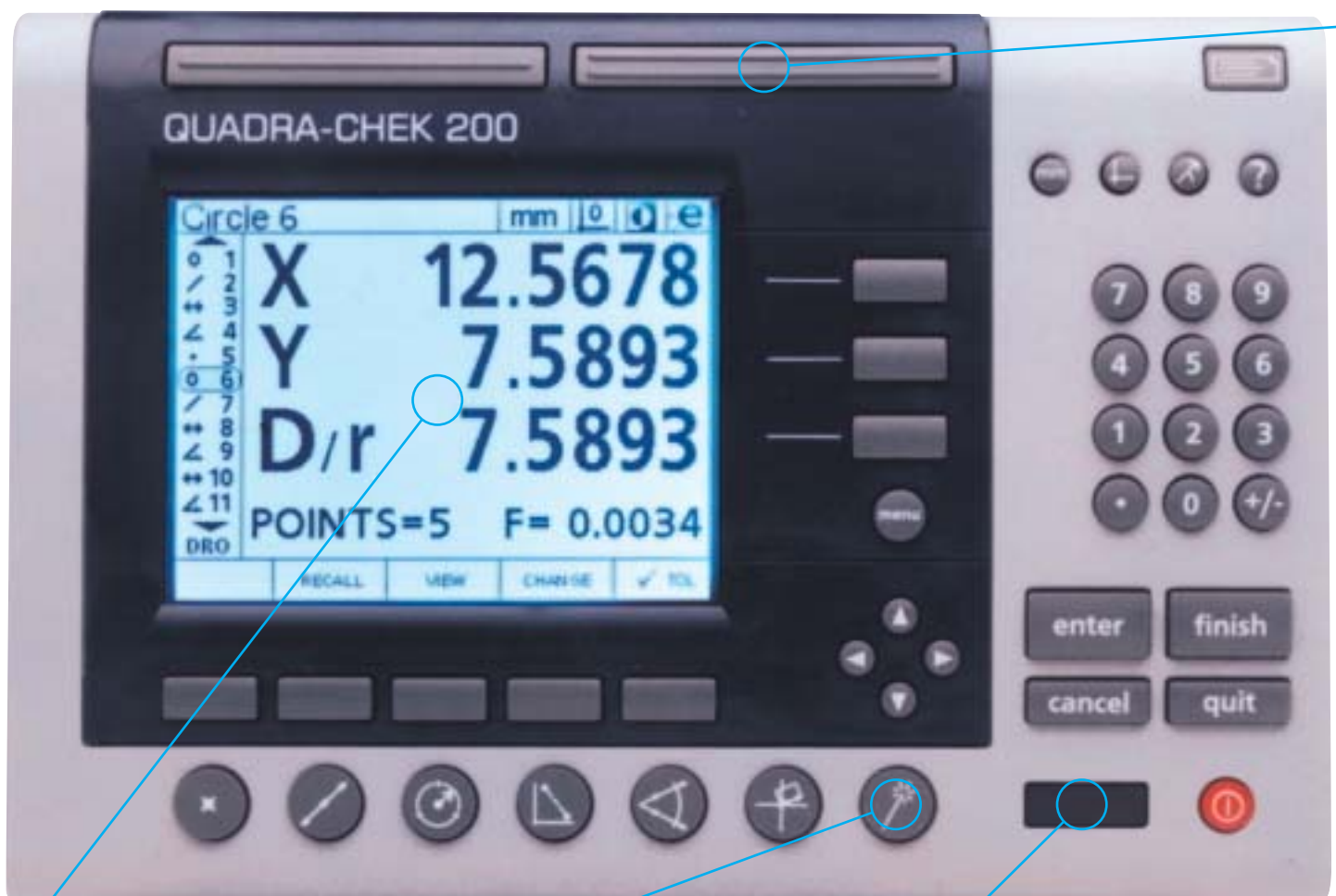
- › CAD export
- › SPC export
- › CNC control
- › Integrated databases
- › Custom reporting

### Global support network

Metronics field engineers, based in offices located all over the world, can assist in the onsite review of dimensional inspection requirements. Complete contact details are available online at [www.metronics.com](http://www.metronics.com).

- › United States
- › France
- › Germany
- › Italy
- › United Kingdom
- › Japan
- › Korea

## Design innovation



**High-visibility LCD display** A backlit LCD with .5" letter height is easy to read in diverse lighting situations and from indirect viewing angles.

**Familiar interface** Familiar, intuitive interface conventions were developed through ongoing operator research to simplify repetitive tasks and expedite the training process.

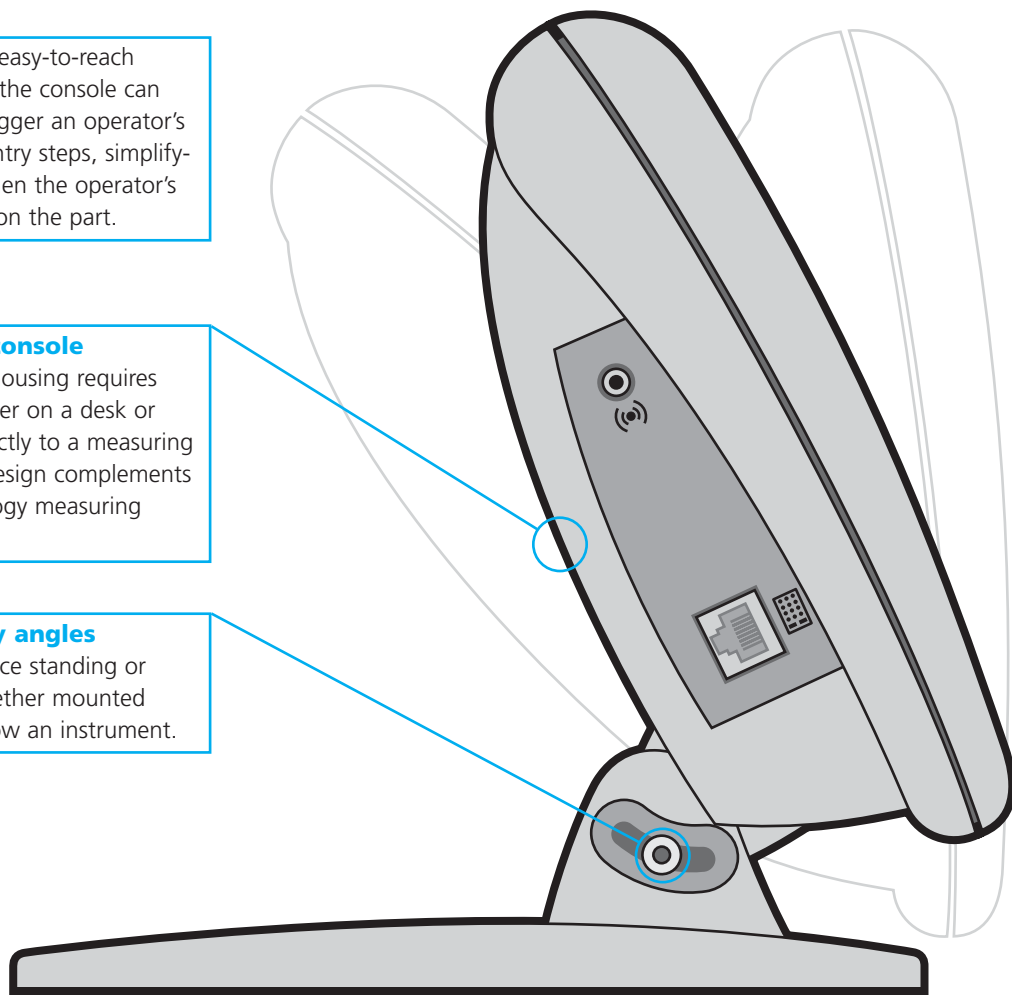
**IrDA communications** Remote control option allows the operator to download data to handheld devices.

Re-designed Quadra-Chek digital readouts incorporate a range of ergonomic and display interface innovations that advance new standards for ease of use.

**HotKeys** Two large, easy-to-reach buttons at the top of the console can be programmed to trigger an operator's most frequent data entry steps, simplifying measurements when the operator's attention must focus on the part.

**Versatile display console**  
The slender monitor housing requires minimal space, whether on a desk or bracket-mounted directly to a measuring tool. Its sleek visual design complements contemporary metrology measuring instrument design.

**Adjustable display angles**  
The monitor tilts to face standing or seated operators, whether mounted above, beside, or below an instrument.



Maximum height: 7.5"

Base depth: 7.5"

# Understand completely



**Architecture** The Quadra-Chek unique interface seamlessly incorporates the best tools and annotation conventions of previous Quadra-Chek products, reducing operator training time. Fast, familiar tools improve productivity and enhance measurement consistency throughout the entire measurement process.



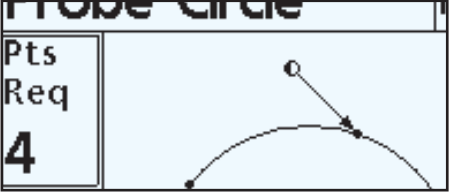
**Input** Reduce operator subjectivity and fatigue, and enhance productivity, through the use of optical edge detection and automatic point entry.



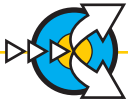
**Measurement** Record desired feature and construction measurements quickly, easily and accurately with patented software features like Measure Magic®. Accelerate the measurement process with tools that automatically complete complex work steps.



**Programming** Simplify difficult and repetitive measurement sequences with robust, easy to use programming tools. Create step-by-step part programs using a simple self-teach mode to guide subsequent measurements.



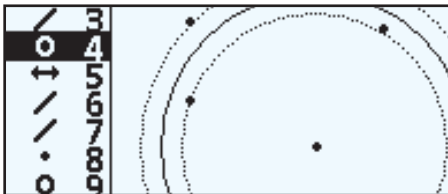
Modern metrology is a complex sequence of measuring, recording, analyzing and reporting dimensional data. The conceptual model underlying Metronics digital readout design organizes the workflow to support operators at every stage of the measurement process.



**Data Management** Manage measurement data in ways that reduce screen clutter, reveal meaningful information patterns and visualize the complex relationships among measured features.



**Output** Streamline communication among operators, management, dispersed departments and quality control teams. Send measurement information to a variety of applications, printers or databases. Exchange formatted data easily with partners or colleagues throughout the company and around the world.



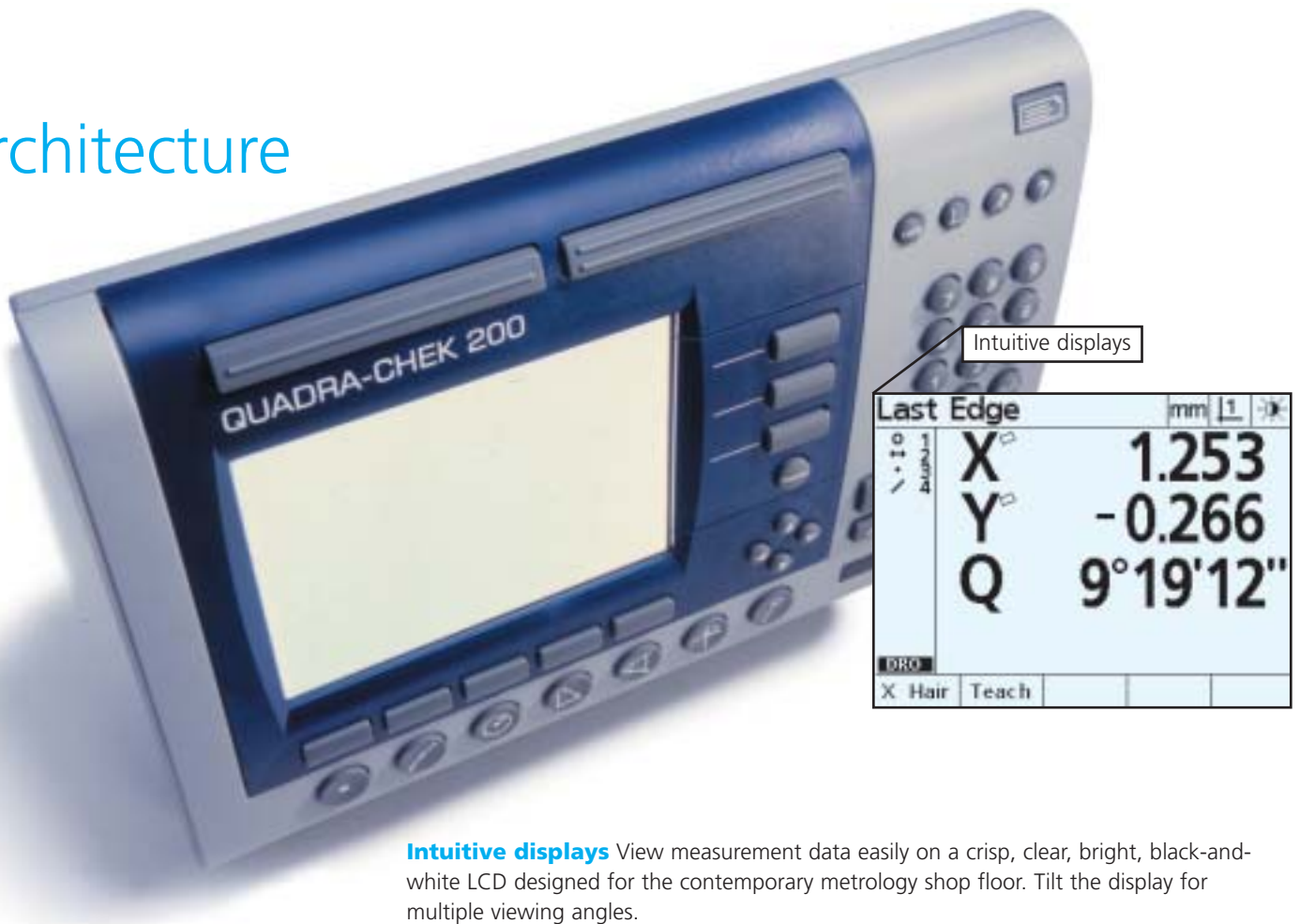
QC-200 Feature Print Out					
Date _____	Time _____				
Job _____					
NO.	FEATURE	ID	UNITS	POSITION	DIMENS
001	Point	1	mm ° DMS	X = 0.600 Y = 1.110	
002	Line	2	mm ° DMS	X = 0.975 Y = 0.655	< =



The powerful, familiar architecture of Quadra-Chek digital readouts empowers operators during every step of the measurement process.



## Architecture



**Intuitive displays** View measurement data easily on a crisp, clear, bright, black-and-white LCD designed for the contemporary metrology shop floor. Tilt the display for multiple viewing angles.

**Consistent user interface** Experience a proven interface consistent with other Quadra-Chek products that ensures operator accuracy and reduces operator training time.

**Options** Get the right tools for the job. Optional remote keypads, footswitches and printers help operators capture the precise measurement data more conveniently while streamlining the work process.

**Sound feedback** Listen for helpful sound feedback from a powerful built-in speaker. Different sound cues prompt operator action without interrupting work flow, speeding data entry.

**Auto repeat** (QC-200) Measure features and print the results on the fly. Improve productivity and recordkeeping, and share information throughout the company and around the world.

**Foreign languages** (QC-200) Communicate in five different languages. The QC-200 software accommodates English, Spanish, Italian, German, and French operators.

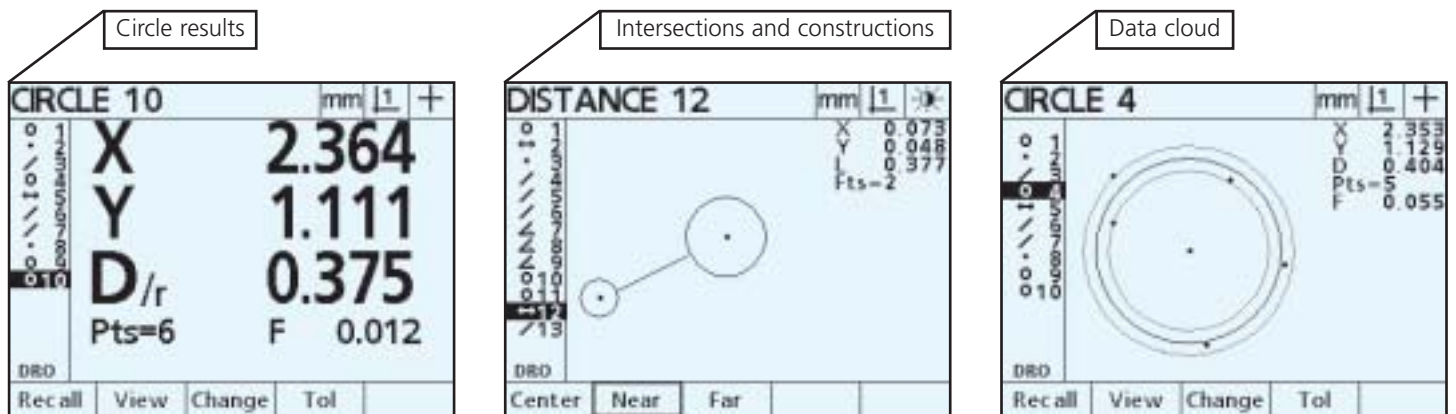
**Context-sensitive help** (QC-200) Decrease training time and costs with graphics-rich, context sensitive help that guides shop floor personnel through Quadra-Chek interface conventions.



Patented features reduce repetitive measures and simplify complex work steps.



## Input and Measurement



**Measure Magic®** To measure, simply probe points and click. Quadra-Chek metrology software detects, without operator intervention, the feature type being measured. With this patented feature, operators can inspect multiple features without taking their eyes off the part which speeds throughput, improves accuracy and reduces user fatigue.

**Intersections and constructions** (QC-200) Obtain essential intersection and construction results by selecting from the list of previously measured features, complete with graphics.

**Data cloud** (QC-200) Improves the presentation of measurement data with graphic displays of measured features that reinforce operator comprehension by visualizing complex data sets.

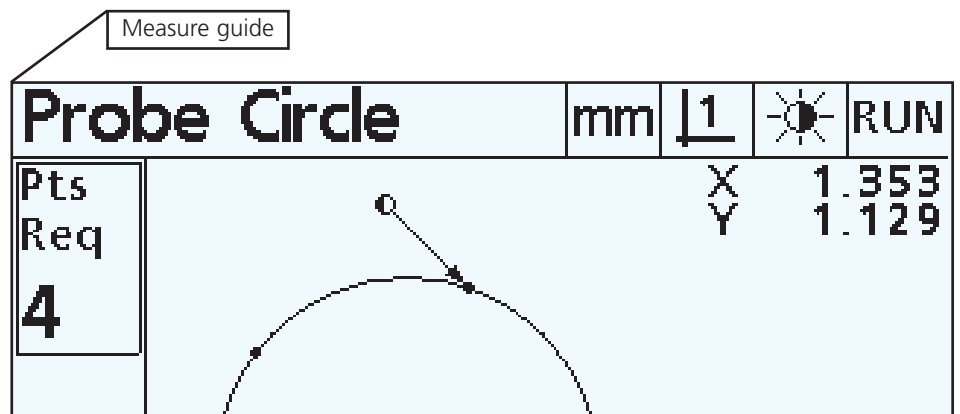
**Geometric tolerancing** (QC-200) Use Quadra-Chek's unique graphic representations to instantly view pass/fail performance details for critical part dimensions.

**Results** Display important measurement data in an uncluttered, comprehensive display.

Quadra-Chek digital readouts feature an easy-to-use programming interface that helps streamline difficult and repetitive measures.



## Programming



**Programming** Intuitive tools simplify the creation of programs that automate repetitive tasks, reducing subjectivity and enhancing productivity.

**Part programming** (QC-200) Quickly and easily create, edit and run part programs. Program a measurement sequence once and run it back as often as you need. Measure the same number of points per feature, in the identical sequence, part after part.

**Measure guide** (QC-200) Visual cues guide each feature measurement of a part, exactly and repeatably, to assure complete and consistent data collection.

Operators can easily format, analyze and communicate measurements throughout the company and around the world.



## Data Management and Output

Print output

QC-200 Feature Print Out						
Date	Time					
Job						
NO.	FEATURE	ID	UNITS	POSITION	DIMENS	
001	Point	1	mm ° DMS	X = 0.600 Y = 1.110		
002	Line	2	mm ° DMS	X = 0.975 Y = 0.655	< =	
003	Circle	3	mm ° DMS	X = 1.150 Y = 0.853	r =	d =
004	Distance	4	mm ° DMS		X =	Y =
005	Line	5	mm ° DMS	X = 1.235 Y = 1.150	< =	
006	Line	6	mm ° DMS	X = 0.880 Y = 0.730	< =	1

**Data management** Metronics digital readouts allow operators to easily analyze and communicate measurements throughout the department and the entire organization.

**Print output** Print measurement results using a serial or parallel printer in an easy-to-read 40- or 80-column format.

**Data output** Parallel and serial ports make it easy to transfer data to PCs, networks and printers, while the IrDA port can be used to download measurement data to handheld PDAs and notebook computers.



A flexible, compact and precise digital readout for 1- to 4-axis instruments. Ideal for measuring angular or linear dimensions. Can be used with inspection tools including optical comparators, measuring microscopes and coordinate measurement machines. *Shown with optional remote control.*



## Quadra-Chek 100 Series



### Inputs

Up to 4 axes

External connections:

*Footswitch*

*Remote keypad*

*Touch Probe*

*RS-232C Serial port*

*Parallel port*

### Configurations

	110	120	121	130	131
X-axis					
Y-axis					
Z-axis					
Q-axis					

### Specifications

LCD	6" black and white
Display digit size	.5"
Resolution down to	.000004" or .0001mm
Operating temperature	0°C–45°C
Enclosure (W x H x D)	11.5" x 7.5" x 2.75"
Base (W x H x D)	10" x 2" x 7.5"
Enclosure weight	3.5 Lbs.
Base weight	7 Lbs.
Input voltage range	85 VAC–264 VAC
Input frequency	43 Hz–63 Hz

Our original digital readout with a fresh new interface and sleek design. A time-saving measurement tool with patented Measure Magic® technology. Ideal for measuring features of 2D features. Can be used with inspection tools such as optical comparators, measuring microscopes and video systems.



## Quadra-Chek 200 Series



### Inputs

Up to 4 axes  
 External connections:  
*Footswitch*  
*Remote keypad*  
*RS-232C Serial port*  
*Parallel port*  
 Optical edge detection

Configurations	220	220e	221	221e	230	230e	231	231e
X-axis								
Y-axis								
Z-axis								
Q-axis (Electronic protractor)								
Optical edge detection								

### Specifications

LCD	6" black and white
Display digit size	.5"
Resolution down to	.000004" or .0001mm
Operating temperature	0°C–45°C
Enclosure (W x H x D)	11.5" x 7.5" x 2.75"
Base (W x H x D)	10" x 2" x 7.5"
Enclosure weight	3.5 Lbs.
Base weight	7 Lbs.
Input voltage range	85 VAC–264 VAC
Input frequency	43 Hz–63 Hz

# Product comparison



## Architecture

	QC-100	QC-200
Display		
Number of digits	9	9
LCD color	B/W	B/W
Digit size	0.45"	0.45"
Auto repeat		
Context-sensitive help		
IrDA (optional)		
Correction		
LEC		
SLEC		
NLEC (optional)		
Orthogonality		
C-scale (AR, HH)		
Footswitch input		
Remote keypad input		
Sound feedback		
Speaker jack		
Date/time stamp		
Tilt adjustment		
Foreign languages (English, Spanish, Italian, German, and French)		



## Inputs

	QC-100	QC-200
Optical edge detection (optional)		
4-axis		
Touch probe input		



## Measurement

	QC-100	QC-200
Point		
Line		
Radius		
Circle		
Angle (vertex point)		
Distance		
Minimum/maximum dist. between features		
Form information		
Measure Magic®		
Data cloud		
Rotary axis		
Incremental/absolute		
Intersections		
Constructions		
Create		
Preset		
Forward/backward annotation		
Feature stamp		
Geometric tolerancing		



## Programming

	QC-100	QC-200
Part programming		
Measure Guide		



## Data Management and Output

	QC-100	QC-200
Output ports		
Parallel		
Serial		
40-column printout		
80-column printout		
Auto print		
SPC output		

We serve industry and laboratories world wide, from major multinational corporations to small privately owned companies.

Each receives the same high standard of pre and post sales service, whether direct from one of Vision's subsidiaries or one of our highly trained and skilled distributors. With our products now represented in over 30 countries, Vision responds to customer demand with speed, efficiency and with innovative solutions.



## Around the world

**Vision Engineering Ltd.**  
(Manufacturing)  
Send Road, Send, Woking  
Surrey, GU23 7ER  
England  
Tel: +44 (0) 1483 223417  
Fax: +44 (0) 1483 223297



**Vision Engineering Ltd.**  
(Commercial)  
Monument House  
Monument Way West  
Woking, Surrey, GU21 5EN  
England  
Tel: +44 (0) 1483 248300  
Fax: +44 (0) 1483 248317  
E-Mail: [generalinfo@visioneng.com](mailto:generalinfo@visioneng.com)  
Website: [www.visioneng.com](http://www.visioneng.com)



**Vision Engineering Inc.**  
(Manufacturing & Commercial)  
570 Danbury Road  
New Milford  
CT 06776  
USA  
Tel: +1 (860) 355 3776  
Fax: +1 (860) 355 0712  
E-Mail: [info@visioneng.com](mailto:info@visioneng.com)  
Website: [www.visioneng.com](http://www.visioneng.com)



**Vision Engineering Inc.**  
(Commercial)  
745 West Taft Avenue  
Orange  
CA 92865  
USA  
Tel: +1 (714) 974 6966  
Fax: +1 (714) 974 7266



**Vision Engineering Ltd.**  
(Central Europe)  
Anton Pendele Strasse 3  
D-82275, Emmering  
Germany  
Tel: +49 (0) 8141 40167-0  
Fax: +49 (0) 8141 40167-55  
E-Mail: [info@visioneng.de](mailto:info@visioneng.de)  
Website: [www.visioneng.de](http://www.visioneng.de)



**Nippon Vision Engineering**  
No. 6 Shinyokohama Hayama Building  
1-28-8 Shinyokohama  
Kohoku-ku, Yokohama-shi  
Japan  
Tel: +81 (0) 45 472 1004  
Fax: +81 (0) 45 472 1177  
E-Mail: [info@visioneng.jp](mailto:info@visioneng.jp)  
Website: [www.visioneng.jp](http://www.visioneng.jp)



**Vision Engineering Ltd.**  
1 Rue de Terre Neuve  
ZA Courtaboeuf  
91967 Les Ulis Cedex  
France  
Tel: +33 (0) 164 46 90 82  
Fax: +33 (0) 164 46 31 54  
E-Mail: [info@visioneng.fr](mailto:info@visioneng.fr)  
Website: [www.visioneng.fr](http://www.visioneng.fr)



**Vision Engineering Ltd Italia**  
Via Pelizza da Volpedo 51  
20092 Cinisella Balsamo MI  
Italy  
Tel: +39 (0) 2 6129 3518  
Fax: +39 (0) 2 6129 3526  
E-Mail: [info@visioneng.it](mailto:info@visioneng.it)  
Website: [www.visioneng.it](http://www.visioneng.it)

Visit our Interactive Multilingual Website  
[www.visioneng.com](http://www.visioneng.com)